

IES Report

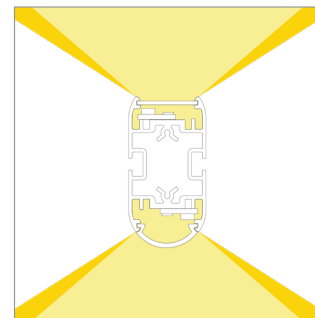
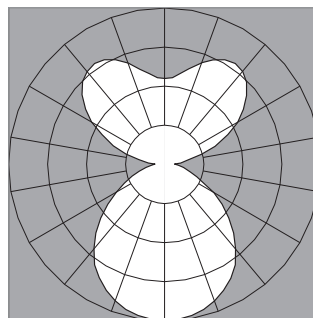
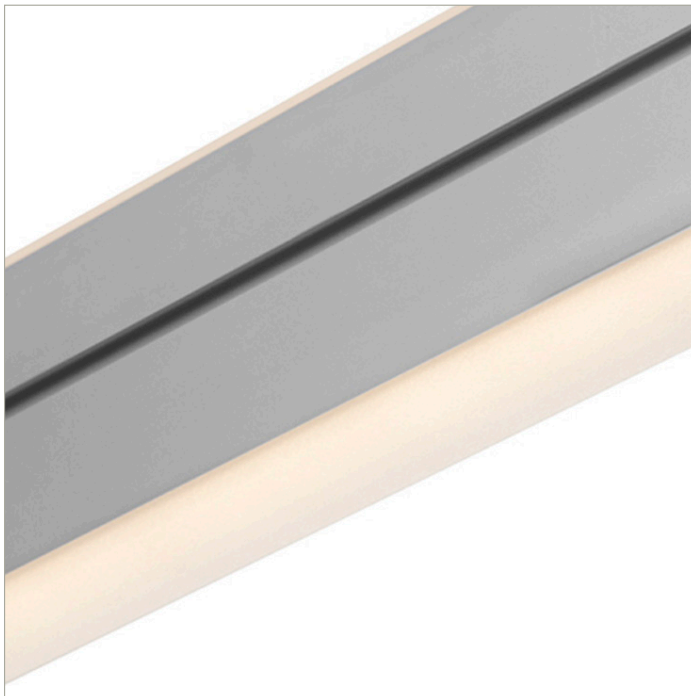
DoubleRace™ | 107 | 120° Batwing, Flat, up | Diffuse, Round, down | 80 CRI | LO

107-DR-XX-4-48-XX-XX-XX-XX-X-X-Z-LO-35-G12-X-XX-X

	2700K	3000K	3500K	4000K
Efficacy - Lumens per Watt	116	120	122	122
Total Lumens, 4' rail length (1219mm)	3191	3292	3359	3359
Lumens per foot (305mm)	798	823	840	840
Lumens per foot UP (305mm)	378	390	398	398
Lumens per foot DOWN (305mm)	420	433	442	442
Input Power (W), 4' rail length (1219mm)	27.6	27.6	27.6	27.6
Watts per foot (305mm)	7.0	7.0	7.0	7.0
CRI	82	82	82	82

Due to the large number of options in Vode's product offering, most Vode IES reports are factored reports prepared from source reports. Source reports are the IES test reports prepared for Vode by an NVLAP accredited photometric test laboratory. Factored reports are based on data from the Vode source reports.

If the data above is in black, it is directly from a Vode source report. If it is in grey, it is factored from Vode source reports. Reference details on Vode source reports can be found on the [IES File Finder](#) page on vode.com.



IES Report

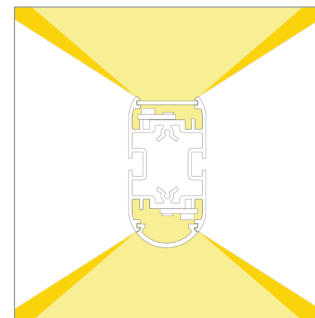
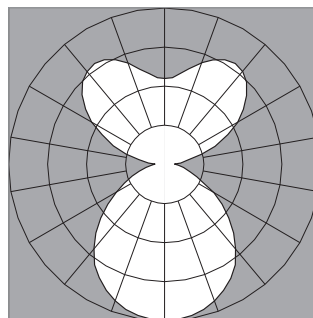
DoubleRace™ | 107 | 120° Batwing, Flat, up | Diffuse, Round, down | 80 CRI | SO

107-DR-XX-4-48-XX-XX-XX-XX-X-X-Z-SO-35-G12-X-XX-X

	2700K	3000K	3500K	4000K
Efficacy - Lumens per Watt	134	138	141	141
Total Lumens, 4' rail length (1219mm)	6383	6584	6719	6719
Lumens per foot (305mm)	1596	1646	1680	1680
Lumens per foot UP (305mm)	756	780	796	796
Lumens per foot DOWN (305mm)	840	866	884	884
Input Power (W), 4' rail length (1219mm)	47.8	47.8	47.8	47.8
Watts per foot (305mm)	12.0	12.0	12.0	12.0
CRI	82	82	82	82

Due to the large number of options in Vode's product offering, most Vode IES reports are factored reports prepared from source reports. Source reports are the IES test reports prepared for Vode by an NVLAP accredited photometric test laboratory. Factored reports are based on data from the Vode source reports.

If the data above is in black, it is directly from a Vode source report. If it is in grey, it is factored from Vode source reports. Reference details on Vode source reports can be found on the [IES File Finder](#) page on [vode.com](#).



IES Report

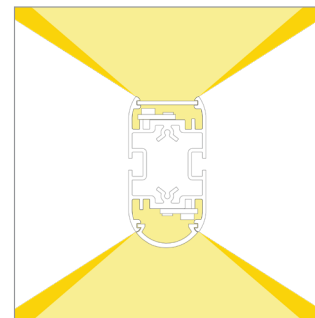
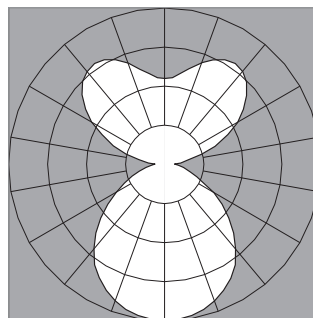
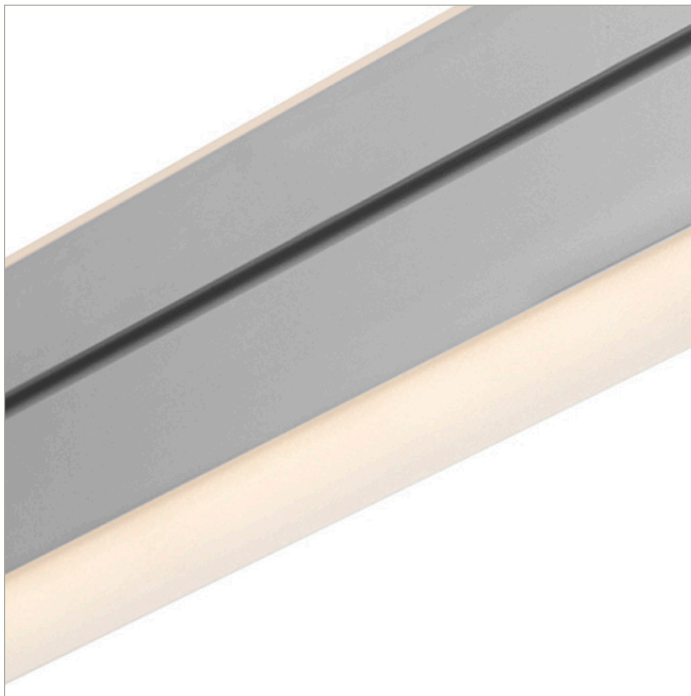
DoubleRace™ | 107 | 120° Batwing, Flat, up | Diffuse, Round, down | 80 CRI | HO

107-DR-XX-4-48-XX-XX-XX-XX-X-X-Z-HO-35-G12-X-XX-X

	2700K	3000K	3500K	4000K
Efficacy - Lumens per Watt	124	128	131	131
Total Lumens, 4' rail length (1219mm)	12127	12510	12766	12766
Lumens per foot (305mm)	3032	3128	3191	3191
Lumens per foot UP (305mm)	1436	1482	1512	1512
Lumens per foot DOWN (305mm)	1596	1646	1680	1680
Input Power (W), 4' rail length (1219mm)	98.1	98.1	98.1	98.1
Watts per foot (305mm)	24.6	24.6	24.6	24.6
CRI	82	82	82	82

Due to the large number of options in Vode's product offering, most Vode IES reports are factored reports prepared from source reports. Source reports are the IES test reports prepared for Vode by an NVLAP accredited photometric test laboratory. Factored reports are based on data from the Vode source reports.

If the data above is in black, it is directly from a Vode source report. If it is in grey, it is factored from Vode source reports. Reference details on Vode source reports can be found on the [IES File Finder](#) page on [vode.com](#).



IES Report

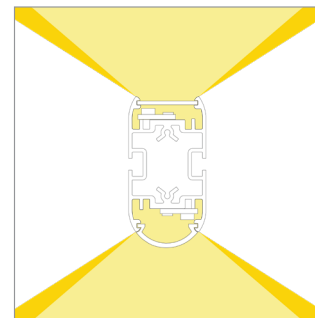
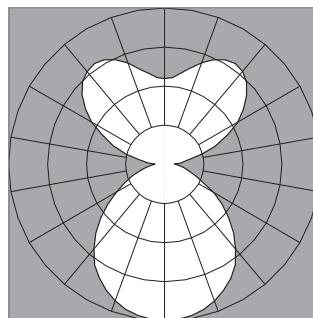
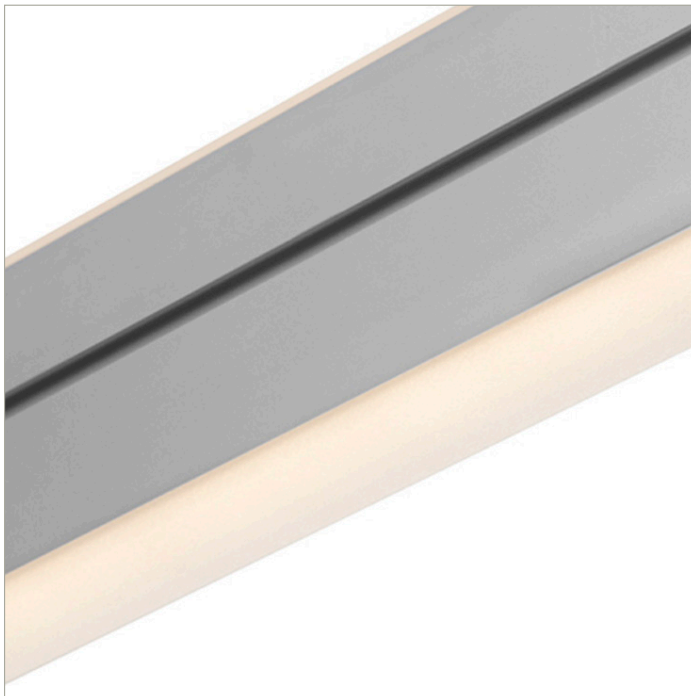
DoubleRace™ | 107 | 120° Batwing, Flat, up | Diffuse, Round, down | 90 CRI | LO

107-DR-XX-4-48-XX-XX-XX-XX-X-X-Z-LO-359-G12-X-XX-X

	2700K	3000K	3500K	4000K
Efficacy - Lumens per Watt	100	103	105	106
Total Lumens, 4' rail length (1219mm)	2751	2838	2896	2925
Lumens per foot (305mm)	688	710	724	731
Lumens per foot UP (305mm)	326	336	343	346
Lumens per foot DOWN (305mm)	362	373	381	385
Input Power (W), 4' rail length (1219mm)	27.6	27.6	27.6	27.6
Watts per foot (305mm)	7.0	7.0	7.0	7.0
CRI	94	94	94	94

Due to the large number of options in Vode's product offering, most Vode IES reports are factored reports prepared from source reports. Source reports are the IES test reports prepared for Vode by an NVLAP accredited photometric test laboratory. Factored reports are based on data from the Vode source reports.

If the data above is in black, it is directly from a Vode source report. If it is in grey, it is factored from Vode source reports. Reference details on Vode source reports can be found on the [IES File Finder](#) page on [vode.com](#).



IES Report

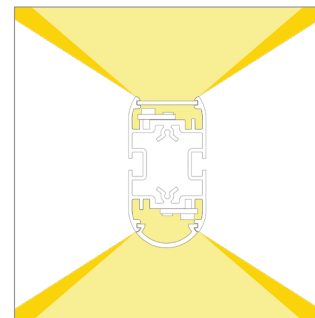
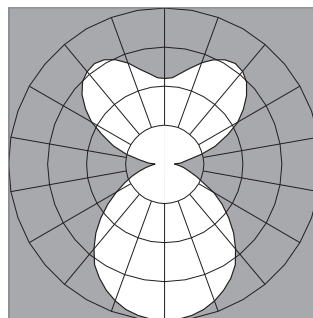
DoubleRace™ | 107 | 120° Batwing, Flat, up | Diffuse, Round, down | 90 CRI | SO

107-DR-XX-4-48-XX-XX-XX-XX-X-X-Z-SO-359-G12-X-XX-X

	2700K	3000K	3500K	4000K
Efficacy - Lumens per Watt	116	119	122	123
Total Lumens, 4' rail length (1219mm)	5502	5676	5792	5850
Lumens per foot (305mm)	1376	1419	1448	1462
Lumens per foot UP (305mm)	652	672	686	693
Lumens per foot DOWN (305mm)	724	747	762	770
Input Power (W), 4' rail length (1219mm)	47.8	47.8	47.8	47.8
Watts per foot (305mm)	12.0	12.0	12.0	12.0
CRI	94	94	94	94

Due to the large number of options in Vode's product offering, most Vode IES reports are factored reports prepared from source reports. Source reports are the IES test reports prepared for Vode by an NVLAP accredited photometric test laboratory. Factored reports are based on data from the Vode source reports.

If the data above is in black, it is directly from a Vode source report. If it is in grey, it is factored from Vode source reports. Reference details on Vode source reports can be found on the [IES File Finder](#) page on vode.com.



IES Report

DoubleRace™ | 107 | 120° Batwing, Flat, up | Diffuse, Round, down | 90 CRI | HO

107-DR-XX-4-48-XX-XX-XX-XX-X-X-Z-HO-359-G12-X-XX-X

	2700K	3000K	3500K	4000K
Efficacy - Lumens per Watt	107	110	113	114
Total Lumens, 4' rail length (1219mm)	10455	10785	11005	11115
Lumens per foot (305mm)	2614	2696	2751	2779
Lumens per foot UP (305mm)	1238	1277	1303	1316
Lumens per foot DOWN (305mm)	1376	1419	1448	1462
Input Power (W), 4' rail length (1219mm)	98.1	98.1	98.1	98.1
Watts per foot (305mm)	24.6	24.6	24.6	24.6
CRI	94	94	94	94

Due to the large number of options in Vode's product offering, most Vode IES reports are factored reports prepared from source reports. Source reports are the IES test reports prepared for Vode by an NVLAP accredited photometric test laboratory. Factored reports are based on data from the Vode source reports.

If the data above is in black, it is directly from a Vode source report. If it is in grey, it is factored from Vode source reports. Reference details on Vode source reports can be found on the [IES File Finder](#) page on [vode.com](#).